



# Nickers n' Tails

*Serving the equine companions who have so loyally served us...*

## Holiday 2011

### In this issue...

Order your 2012 Rainbow Meadows calendar today... 2

Come see us at EquiFest..... 2

Don't forget the horses!..... 2

Join our 2012 Rainbow of Hope..... 4-5



Horse-loving artists donate time, talents..... 6



*An IRS-designated 501(c)3 public charity- contributions are tax deductible.*



## Join us for our annual Benefit and Gala!

**For the Love of Horses...**  
A Mane Affair Benefit and Gala

February 25th, 2012  
6:00 - 9:30 p.m.

At Wichita's Downtown  
Midian Shrine Temple

*\$60 per plate or \$400 per 8-person table.  
Seating limited. RSVP required.*

**"Hoofbeats of the Heart"**

Join us for an evening of exquisite food and cocktails, a silent auction and more - all for the horses!




To be held in the  
Mecca Room - 2nd Floor  
Midian Shrine - 130 N. Topeka  
Wichita, KS

\*Parking lots to north, south and east. Elevator available\*

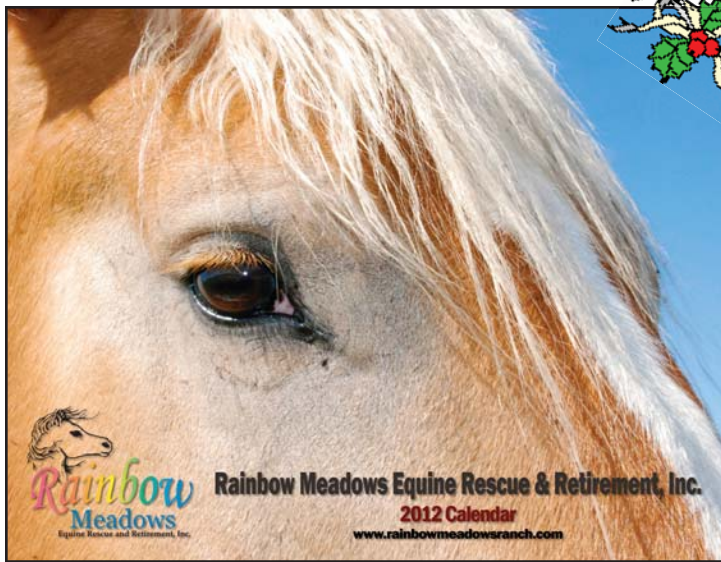
Please RSVP to Karen Everhart at 620-725-3402 or  
[karen.everhart@rainbowmeadowsranch.com](mailto:karen.everhart@rainbowmeadowsranch.com) no later than February 19th.

All proceeds to benefit Rainbow Meadows Equine Rescue and Retirement, Inc., an IRS-designated 501(c)3 public charity.  
[www.rainbowmeadowsranch.com](http://www.rainbowmeadowsranch.com)

Sponsorships available.

[www.vistapoint.com](http://www.vistapoint.com)



## Order your 2012 Rainbow Meadows calendar today!

*Just in time for Christmas - a perfect gift for the horse lover in your life!*

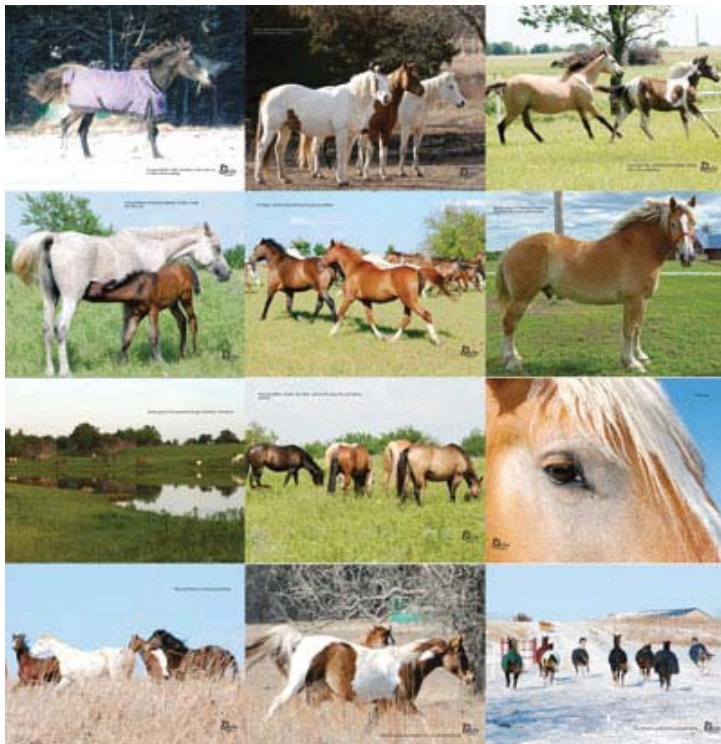
**\$20 each**

(plus \$7 shipping and sales tax)

Go to

[www.rainbowmeadowsranch.com](http://www.rainbowmeadowsranch.com)

for more details!



## Come see us at EquiFest!



Rainbow Meadows will again be hosting a booth and display area in the Stall Barn at the 2012 EquiFest of Kansas, February 10-12, 2012 at the Kansas Coliseum ([www.equifestofks.com](http://www.equifestofks.com)). Mark your calendars and be sure to come out!



## Doing some shopping? Don't forget the horses!

*iGive.com has more than 680 stores that will donate to Rainbow Meadows each time you shop!*

Just go to [www.iGive.com](http://www.iGive.com), and select "Rainbow Meadows" as your cause. Then get registered, and start shopping!



*We've also got lots of great items at our sale barn on eBay - plus the money all goes back to the horses!*



Check out our eBay Giving Works listing page at [donations.ebay.com/charity/charity.jsp?NP\\_ID=31170](http://donations.ebay.com/charity/charity.jsp?NP_ID=31170). The horses thank you!

# Rainbow Meadows has its own wine label!



## RAINBOW MEADOWS ESTATES



## [www.BenefitWines.com/rainbow](http://www.BenefitWines.com/rainbow)

### Cabernet Sauvignon

Rich and ripe, this organic cabernet features ripe berry aromas and an intensely fruity character. Smooth and well structured, it has soft velvety tannins on the finish. Well paired with lasagna, beef or spicy foods.

### Chardonnay

Lovely straw yellow hues are laced with beautiful golden and greenish reflections this unoaked chardonnay shows lively flavors and aromas of apricots, apples and tropical fruits. Crisp, medium bodied and well balanced; it pairs well with salads, pasta, fish, seafood and chicken.

### Merlot

This estate grown, organic, handcrafted merlot shows a deep red color with aromas of black pepper and ripe red fruit. Soft and well balanced this merlot displays all the characteristics of the varietal. The velvety and spicy finish matches perfectly with turkey, grilled meats, pasta and pizza.

### Pinot Noir

An elegant red organic wine displaying the typical varietal aromas of Pinot Noir with layers of ripe red fruit flavors. It's soft and fresh on the palate with a long lingering finish; delicious when served with roast chicken or seafood.

### Sauvignon Blanc

A crisp, mouth - watering organic Sauvignon Blanc with refreshing tropical and citrus fruit flavors and a clean well-balanced finish. Delicious when served as an aperitif or with creamy pasta or grilled fish.

### Malbec

A medium bodied and soft Malbec will delight with plums, leather and chocolate overtones. With well-balanced acidity it provides a juicy and easy drinking red wine.



2 Juniper Street - Winchendon, MA 01475 - (978)297-5477 - Fax: (978)344-0410

**With every purchase, Rainbow Meadows gets 100% of the profits!**

*Order yours today in time for the holidays!*



# Join our 2012 Rainbow of Hope!

The new year is just around the corner, and so is our 2012 Rainbow of Hope membership program! Check out the new details on our levels, and be sure to become a 2012 member - your support is what makes it possible for Rainbow Meadows to help so many horses. Contact membership director Kim Swalley at [kim.swalley@rainbowmeadowsranch.com](mailto:kim.swalley@rainbowmeadowsranch.com) or go to [www.rainbowmeadowsranch.com/Rescue\\_RainbowOfHope.htm](http://www.rainbowmeadowsranch.com/Rescue_RainbowOfHope.htm) to learn more!



## 2012 Membership Levels



### Red Level

Red level members will receive a frame-able 5x7 certificate & window decal. A horseshoe on the Rainbow of Hope will be painted **red** in their honor.



### Orange Level

Orange level members will receive a frame-able 5x7 certificate, window decal & Rainbow Meadows pen. A horseshoe on the Rainbow of Hope will be painted **orange** in their honor.



### Yellow Level

Yellow level members will receive a frame-able 5x7 certificate, window decal & Rainbow Meadows cap. A horseshoe on the Rainbow of Hope will be painted **yellow** in their honor.



### Green Level

Green level members will receive a frame-able 5x7 certificate, window decal & Rainbow Meadows knife. A horseshoe on the Rainbow of Hope will be painted **green** in their honor.



### Blue Level

Blue level members will receive a frame-able 5x7 certificate, window decal & Rainbow Meadows polo. A horseshoe on the Rainbow of Hope will be painted **blue** in their honor.



### Purple Level

Purple level members will receive a frame-able 5x7 certificate, window decal & Rainbow Meadows blanket. A horseshoe on the Rainbow of Hope will be painted **purple** in their honor.



### Gold Level

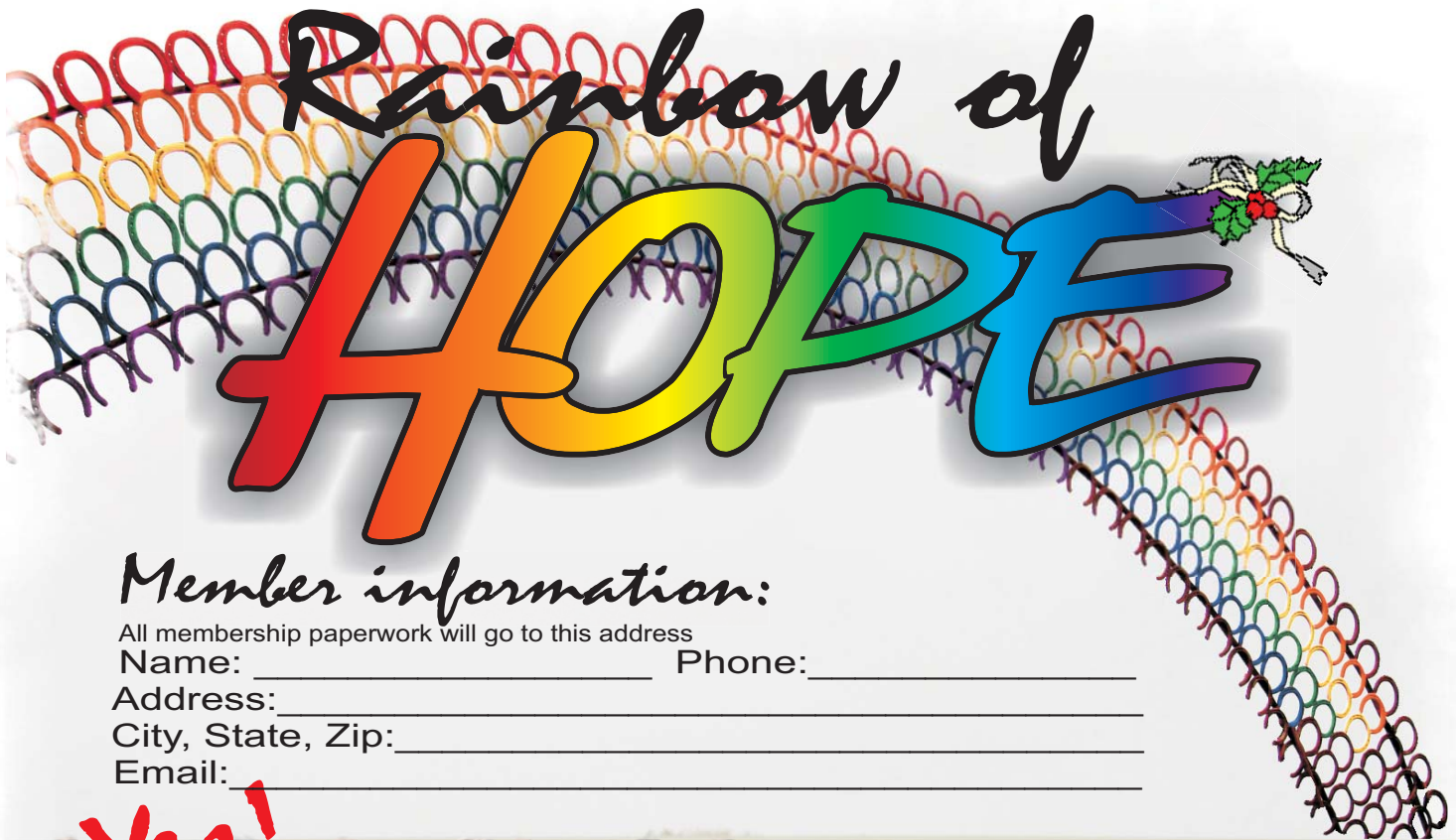
Gold level members will receive a frame-able 5x7 certificate, window decal & Rainbow Meadows picnic chair. A horseshoe on the Rainbow of Hope will be painted **gold** in their honor.



1949 Dalton Rd. Sedan, KS 67361 620-725-3402  
[www.rainbowmeadowsranch.com](http://www.rainbowmeadowsranch.com)

An IRS-designated 501(c)(3) public charity. All donations are tax deductible





**Member information:**

All membership paperwork will go to this address

Name: \_\_\_\_\_ Phone: \_\_\_\_\_  
 Address: \_\_\_\_\_  
 City, State, Zip: \_\_\_\_\_  
 Email: \_\_\_\_\_

**Yes!**

I would like to give **HOPE** to the horses at Rainbow Meadows with a donation. I have enclosed my tax-deductible gift in the amount of \$ \_\_\_\_\_  monthly  one-time

**Payment information:**

All billing paperwork will go to this address. If same as member info just mark "Same"

Name: \_\_\_\_\_ Phone: \_\_\_\_\_  
 Address: \_\_\_\_\_  
 City, State, Zip: \_\_\_\_\_  
 Email: \_\_\_\_\_

**Membership Levels**

--	--	--	--	--	--	--

Check one:

**More options:**

- Please renew my membership annually
- Pay it forward! Keep my membership gift so the horses will get more benefit from my donation

Or sign-up online at:

[http://www.rainbowmeadowsranch.com/Rescue\\_RainbowOfHope.htm](http://www.rainbowmeadowsranch.com/Rescue_RainbowOfHope.htm)



**Rainbow Meadows**  
 Equine Rescue and Retirement, Inc.

1949 Dalton Rd. Sedan, KS 67361 620-725-3402

[www.rainbowmeadowsranch.com](http://www.rainbowmeadowsranch.com)

An IRS-designated 501(c)(3) public charity. All donations are tax deductible



# Horse-loving artists donate time, talents

Rainbow Meadows has been the recipient of the support of countless passionate and talented individuals. But in particular, two separate artists have made it their mission to help the horses as they create their master pieces.

Jan Asleson and Lee Mitchelson have both committed to donating a portion of the sales of certain artwork pieces to Rainbow Meadows. Both work in various mediums and materials and many of their pieces are inspired by the spirit of the horse. Learn more about each artist by visiting their website and eBay sales page.



(Above) Artist Jan Asleson completes a piece at a Rainbow Meadows event in 2008.

(Below, left) Jan Asleson's Pegasus Horse Bronze pendant  
(Below, right) Lee Mitchelson's "Free Spirit" Oil Painting

**Thank you, Lee and Jan, for sharing your passion and extraordinary talent with the horses!**

## Lee Mitchelson

<http://leemitchelson.net>

*eBay sales page:*

[myworld.ebay.com/artfulgifter](http://myworld.ebay.com/artfulgifter)


## Jan Asleson

<http://healinghandsart.net>

*eBay sales page:*

[myworld.ebay.com/danhunterriding](http://myworld.ebay.com/danhunterriding)



 *Yes, I want to give...*

Name: \_\_\_\_\_

Address: \_\_\_\_\_ City/State: \_\_\_\_\_ Zip code: \_\_\_\_\_

Home phone: \_\_\_\_\_ Cell phone: \_\_\_\_\_ E-mail: \_\_\_\_\_

### Donation information:

Amount: \$ \_\_\_\_\_  Cash  Check (Payable to: Rainbow Meadows Equine Rescue and Retirement, Inc.)

If you would like to donate online, go to [www.rainbowmeadowsranch.com/Rescue\\_HowToDonate.htm](http://www.rainbowmeadowsranch.com/Rescue_HowToDonate.htm)

# Upcoming events

## **February 10-12, 2012**

Come see us at EquiFest of Kansas  
*Kansas Coliseum - Wichita, Kan.*  
[www.equifestofks.com](http://www.equifestofks.com)

## **February 25, 2012**

“For the Love of Horses...” Benefit and Gala  
*Midian Shrine Temple - Wichita, Kan.*

*For more information about our upcoming events, go to*  
[www.rainbowmeadowsranch.com/Rescue.htm](http://www.rainbowmeadowsranch.com/Rescue.htm)

*All services provided by Rainbow Meadows Equine Rescue and Retirement, Inc. are funded entirely by gifts and donations. For more information about how you can help support these extraordinary equines, please contact:*

## **Karen Everhart, Executive director**

Rainbow Meadows  
Equine Rescue and Retirement, Inc.  
1949 Dalton Road  
Sedan, KS 67361  
Phone: (620) 725-3402

Email: [karen.everhart@rainbowmeadowsranch.com](mailto:karen.everhart@rainbowmeadowsranch.com)  
[www.rainbowmeadowsranch.com/Rescue.htm](http://www.rainbowmeadowsranch.com/Rescue.htm)

*or click here to donate:*



**Thank you for your support!**



**Rainbow Meadows Equine Rescue  
and Retirement, Inc.**

1949 Dalton Road  
Sedan, KS 67361